

# Vertex Compressor Services

## Keep your lake aeration going strong!

**Even the best equipment wears out eventually.** Before deciding on buying a new compressor or sending it out to be rebuilt, call your Vertex Dealer for a FREE troubleshooting consultation. If the problem is minor that may be all you need. If not, our compressor service department can get it up and running again.

**Why have Vertex remanufacture your compressor?** Vertex repair technicians have extensive assembly training to become experts in the workings of your compressor and know it better than anyone. After all, we design, build and ship aeration systems every day!

- ◆ Lengthen compressor life
- ◆ Avoid expensive compressor replacement
- ◆ Improve compressor performance
- ◆ 1 year limited warranty on rebuilt units excluding normal wear and tear
- ◆ Vertex Dealer network available for convenient, fast turnaround

### Work is performed as needed:

#### Full electrical and mechanical evaluation:

- ◆ Motor continuity electrical check
- ◆ Capacitor inspection and microfarads testing
- ◆ Run test at rated pressure
- ◆ Amperage and voltage draw

#### Compressor is disassembled, cleaned and rebuilt:

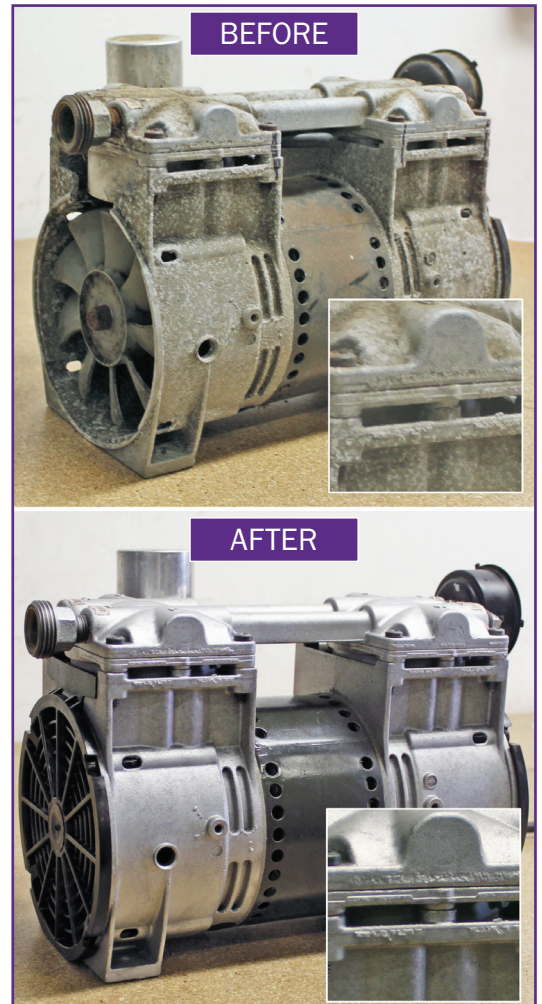
- ◆ Motor windings are cleaned to remove dirt, debris and dust
- ◆ Fan and fan guard are inspected and thoroughly cleaned
- ◆ Piston cups, cylinders, o-rings, head gaskets, and flapper valves replaced if needed
- ◆ All motor shaft and piston bearings are replaced
- ◆ Compressor is reassembled and safety tested

#### Other work performed:

- ◆ Exterior compressor body cleaned
- ◆ If provided, muffler, pressure gauge, solenoid and pop-off valve are inspected and tested
- ◆ Compressor returned to you in special packaging to avoid shipping damage

#### What more do you need to know?

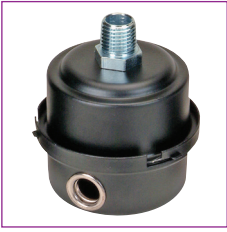
The initial evaluation may show the need to replace parts that are not a part of the rebuild including fan blades and guards, air filter, capacitors, mounting feet, pressure gauges, relief valves, etc. *Vertex will contact you before proceeding.*



**Call 1.844.432.4303**  
today to learn more



# Vertex Compressor Service Parts



## Filter

Filters clean the air entering the compressor to prevent dirt and grit from premature wearing of components and pressure loss. The filter assembly is the device where the filter is placed.

**Typical service life:** Filters: 6-12 months in clean environments but as little as 1 month in highly dusty, dirty environments. Filter assembly service life is indefinite.

**Recommendation:** Clean/wash filters every 3 months and the filter assembly as required.



## Pressure Gauge

Essential to balancing air flow, diagnosing problems and detecting a compressor over-pressure condition. A gauge that fails to return to zero pressure when the system is turned off needs replacing.

**Typical service life:** 3 years.

**Recommendation:** Replace when defective or unreadable.

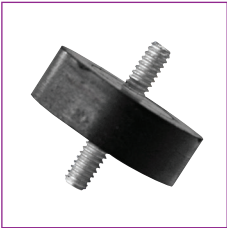


## Capacitor

Provides the extra electrical power required to start the compressor. Capacitors can corrode or leak, preventing the compressor from starting, which results in motor damage and/or failure.

**Typical service life:** 5 years.

**Recommendation:** Replace every other rebuild service or every 5 years, whichever occurs first.



## Compressor Feet

Provide a cushion between the compressor and cabinet floor reducing vibration and noise. Constant heat and vibration eventually degrade and crack the rubber feet.

**Typical service life:** 5 years.

**Recommendation:** Replace every other rebuild service or every 5 years, whichever occurs first.



## Cabinet Cooling Fan

Draws in fresh outside air to cool the compressor. Without a properly working fan the compressor will overheat and fail, resulting in expensive replacements.

**Typical service life:** 3 years.

**Recommendation:** Replace every compressor rebuild service or every 3 years whichever occurs first.



## Compressor Blade

Pushes air across the motor winding to keep it cool.

**Typical service life:** Indefinite. Do not usually require replacement unless they have been damaged by a foreign object or broken during a motor repair.

**Recommendation:** Replace only if broken.



\*Refurbished parts are available on request.